



# ROUGH SAWN SHAKE INSTALLATION INSTRUCTIONS



1. Royal Designer Shake should only be installed on a smooth, flat surface. There are 3 options in re-siding older homes:

A) Remove old siding and install Royal Designer Shake over the original sheathing. Before installing Royal Designer Shake panels, make sure the sheathing is leveled.

B) Install a sheathing board, such as Form-Cor, over the old siding to form a smooth, flat surface. If a foil-faced sheathing is used, the foil side should be facing in towards the house.

C) If strapping is used, sheathing must be used over the strapping before the Royal Designer Shake is installed.

2. Install Royal Designer Shake Rough Sawn Starter Strip level at the bottom of the area to be covered with Royal Designer Shake. Leave 3" from the end of the starter strip to the wall corner.

3. Install Royal Designer Shake 5/8" Vinyl J-Channel around areas where panels are not to be installed. (e.g. windows, doors).

#### 4. Royal Vinyl Corner Post Instructions

Position outside corner post with the top of the post 1/4" from the underside of the eave and the bottom of the corner post 3/4" below the starter strip. Remove the bottom 3/4" of the nailing flange so it will not show below the siding when installed.

Make sure posts are straight and true before nailing. Hang corner posts by first positioning a nail at the top of the topmost nail slot. Position all remaining nails in the center of nail slots a maximum of every 10". This nailing pattern is to be followed on both nail flanges of each post.

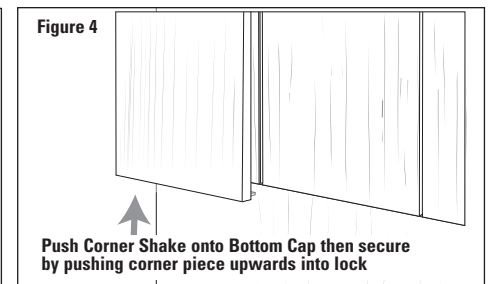
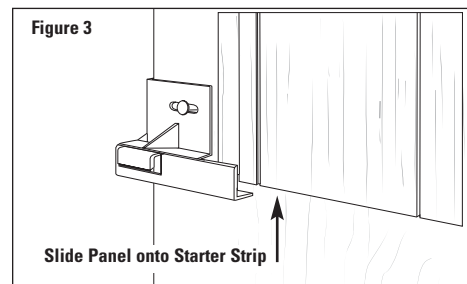
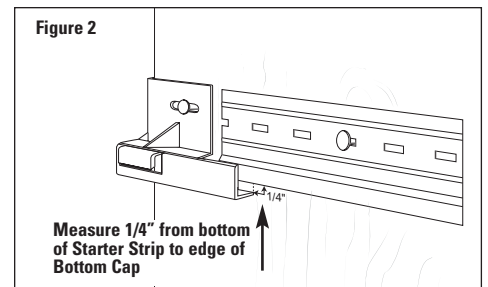
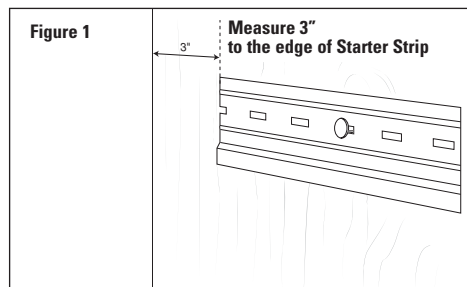
If posts must be spliced for high walls, cut 1" off the nailing flanges and back from the bottom portion of the upper post. Then lap 3/4" of the upper post over the lower post, allowing 1/4" for expansion. This method will provide an obvious joint between the two posts, but will allow water to flow over the joint, reducing the chance of water infiltration.

5. Cut the left end off the first panel to be installed at a 90° angle at line marked "1" on panel. Hook the panel into the starter strip and butt it into the corner post, then back off 1/4" working from left to right, continue locking full panels across the wall until you come to the other corner post.

Measure the length required accurately for the last piece and deduct 1/4". Cut the panel at 90° and put into the corner. Be sure all panels installed into J channels are cut 1/4" short for proper movement (see Figure A).

#### 6. Royal Rough Sawn Corner Post Instructions (see Figures 1 to 4)

Always install Royal Rough Sawn corners from the bottom of the house up. When installing the corners, you must install the shake siding starter strip first, confirming the starter strip is level at the bottom of the area to be covered with Rough Sawn Royal Designer Shake.



Next, install the shake corner starter strip, confirming the corner starter strip is 1/4" lower than the Royal Rough Sawn panel starter strip for proper alignment (see Figure 2).

Then, install the entire shake siding on both sides of the wall before the installation of the corner posts, ensuring to slide the panels onto the starter strip securely (see Figure 3). Please note that the siding must be spaced 3" from the end of each wall corner (see Figure 1). Finally, install Royal Rough Sawn

# ROUGH SAWN SHAKE INSTALLATION INSTRUCTIONS

Figure A

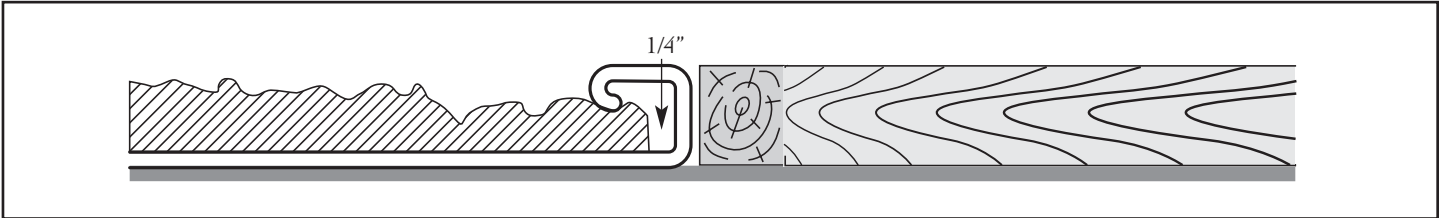
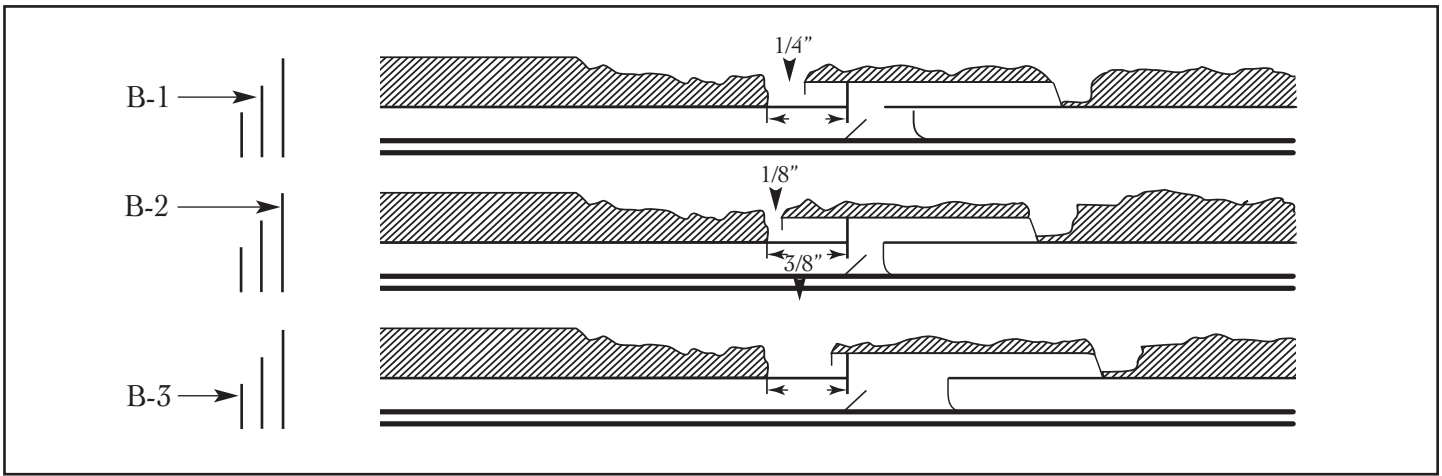


Figure B



corner posts by fitting them otop of the shake panels, giving them a clean, pleasant look.

When installing the first corner, ensure it has been fully locked into the corner starter strip, making sure the top of the panel is in line with the top of the corner. Nail the corner through the center of both nail slots at the top of the corner. Follow the same procedure for every corner installed up the wall thereafter. Try to layout the job so a complete corner can be used at the top of the wall for best appearance.

**7.** On overlap joints at the end of each panel, it is important to allow for expansion and contraction. See Figure B for correct overlapping.

B-1 Correct overlap when installing Royal Designer Shake at temperatures between 45°F (7°C) and 80°F (27°C), indicated by middle line on top left corner of panel.

B-2 Correct overlap when installing Royal Designer Shake at temperatures over 80°F (27°C), indicated by longest line on top left corner of panel.

B-3 Correct overlap when installing Royal Designer Shake at temperatures under 45°F (7°C), indicated by shortest line on top left corner of panel.

**8.** Nailing Panels - Use a minimum of 5 nails per panel. The nails should be only galvanized steel or aluminum to prevent rusting. All nails must penetrate at least 3/4" into solid wood. **Do not set nails.** Do not nail panels other than in the nailing slots provided. Put the nail in the middle of the nailing slot to allow for lateral movement of the panels during temperature changes. It is recommended that the first nail be placed in center hole and then every other nail be placed 6" to 8" apart.

**9.** When starting the second course of panels, cut the first panel at the line marked "2" on the panel. Be sure the panel is interlocked but do not force it. When starting the third course of panels, cut the first panel at "3" on the panel. Be sure to maintain order sequence of line marking cuts to "1", "2", "3", "1", "2", "3" and so on, to prevent a pattern as you move up the wall.

**10.** If at the top of the wall section you have to cut the panels and have no nailing slots, install a 5/8" J channel and lock the panel in place. Then drill a 3/8" hole and nail in the center snugly.

**Caution: If these instructions are not followed and/or Royal Designer Shake accessories are not used, the Homeowner's Warranty may be invalidated.**