

# HAND-SPLIT SHAKE INSTALLATION INSTRUCTIONS



**1.** Royal Designer Shake should only be installed on a smooth, flat surface. There are 3 options in re-siding older homes:

A) Remove old siding and install Royal Designer Shake over the original sheathing. Before installing Royal Designer Shake panels, make sure the sheathing is leveled.

B) Install a sheathing board, such as Form-Cor, over the old siding to form a smooth, flat surface. If a foil-faced sheathing is used, the foil side should be facing in towards the house.

C) If strapping is used, sheathing must be used over the strapping before the Royal Designer Shake is installed.

**2.** Install Royal Designer Shake Hand Split Starter Strip level at the bottom of the area to be covered with Royal Designer Shake. Cut the starter strip 6" short of the building corner to allow for the installation of Royal Designer Shake Corners.

**3.** Install Royal Designer Shake 1-1/4" Vinyl J Channel, in the same color, around areas where panels are not to be installed. (e.g. windows, doors).

**4.** Install Royal Designer Shake Corners on each corner of the wall plumb and at 90 degree angle to the starter strip, working from left to right. The bottom of the corner should be 9/16" below the starter strip. See Figure A. Try to layout the job so a complete corner can be used at the top for best appearance. Use 2 nails on each side of the corner, using the slots provided. Nail snug.

**5.** Cut the left end off the first panel to be installed at a 90 degree angle. Hook the panel into the starter strip and butt it to the corner post. Working from left to right, continue locking full panels across the wall until you come to the other corner post. Measure the length required accurately for the last piece. Cut the panel at 90 degrees and butt up to the corner. Be sure all panels installed into J channels are cut 1/4" short for proper movement. See Figure B.

# HAND-SPLIT SHAKE INSTALLATION INSTRUCTIONS

Figure D

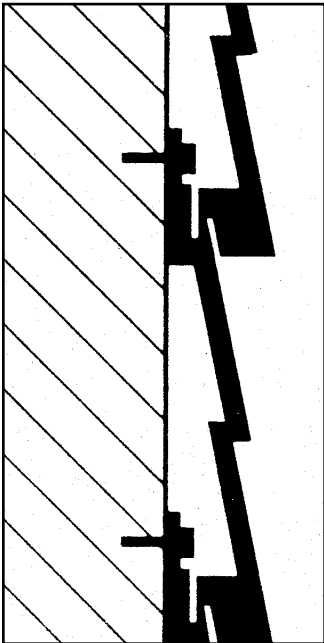


Figure A

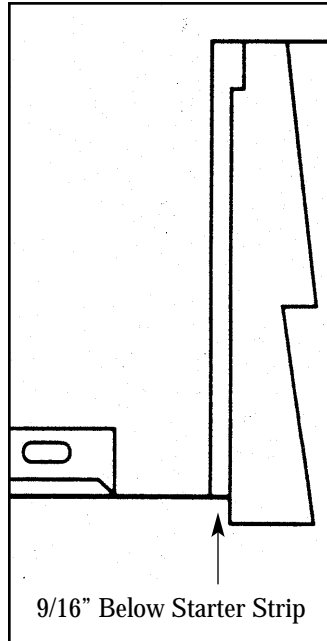


Figure B

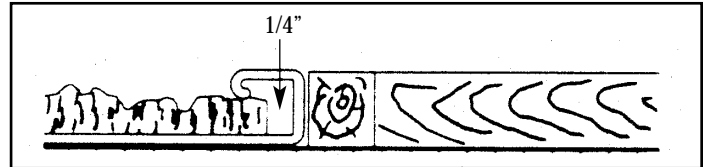
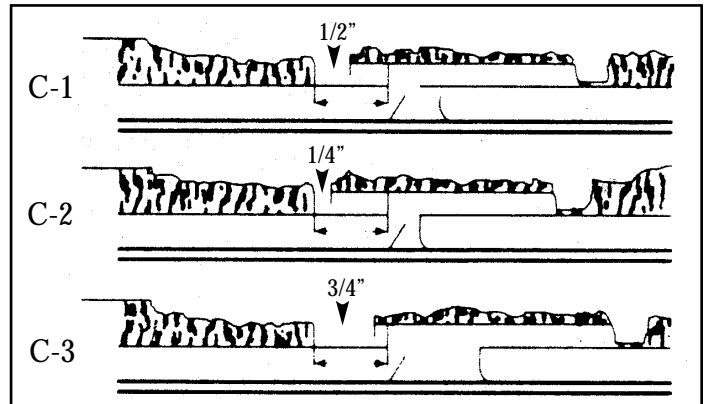


Figure C



**6.** On over lap joints at the end of each panel, it is important to allow for expansion and contraction. See Figure C for correct overlapping.

C-1 Correct overlap when installing Royal Designer Shake at temperatures between 45°F (7°C) and 80°F (27°C).

C-2 Correct overlap when installing Royal Designer Shake at temperatures over 80°F (27°C).

C-3 Correct overlap when installing Royal Designer Shake at temperatures under 45°F (7°C).

**7.** Nailing Panels - Use a minimum of 5 nails per panel. The nails should be only galvanized steel or aluminum to prevent rusting. All nails must penetrate at least 3/4" into solid wood. Do not set nails. Do not nail panels other than in the nailing slots provided. Put the nail in the middle of the nailing slot to allow for lateral movement of the panels during temperature change.

**8.** When starting the second course of panels, cut the first panel approximately 12" different in length from the first panel on the first course. Be sure to vary the length of cut on every other course to prevent a pattern as you move up the wall. Be sure the panel is interlocked but do not force it. Figure D.

**9.** If at the top of the wall section you have to cut the panels and have no nailing slots, install a 1-1/4" J Channel and lock the panel in place. Then drill a 3/8" hole and nail in the center snugly.

**Caution:** If these instructions are not followed and/or Royal Designer Shake accessories are not used, the Homeowner's Warranty may be invalidated.