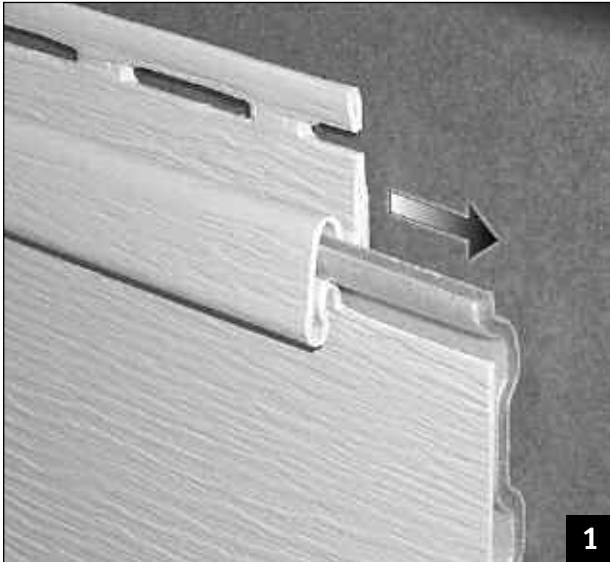




# DuraPlank™

REINFORCED SIDING

## Installation Guide

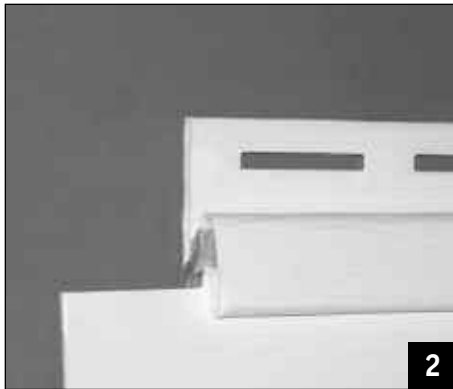


Slide foam to align to the end of the DuraPlank panel.

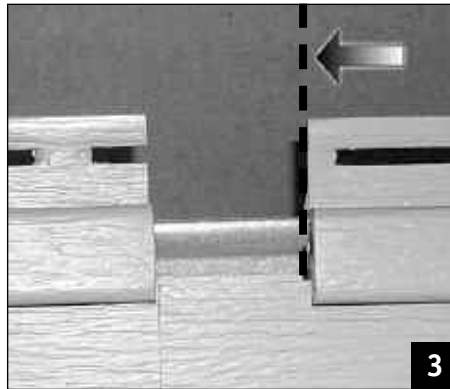
### Installing DuraPlank Panels

**Note:** Please refer to RBP installation guide for more detailed instructions on the installation of vinyl siding.

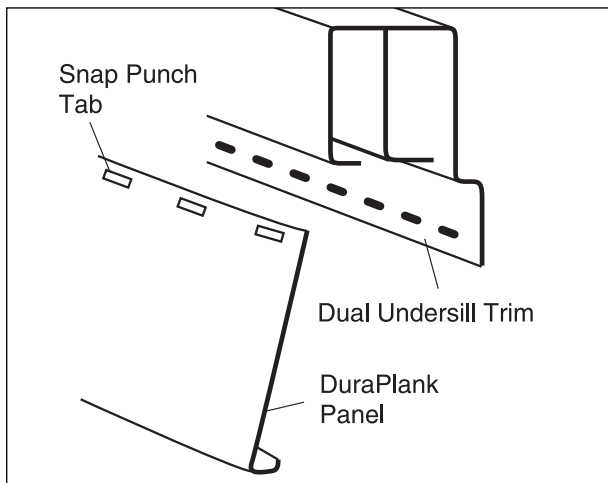
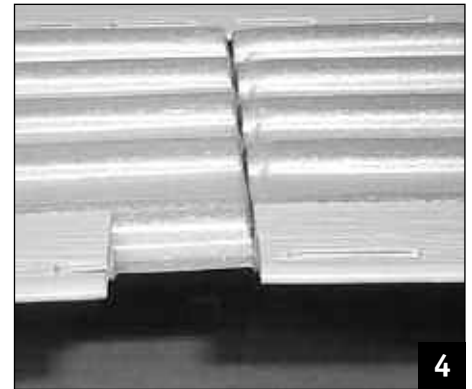
- Please follow opening directions on carton. This product must be taken out of the carton from the top as opposed to sliding from an end.
- **Slide foam to align to the end of the DuraPlank panel.**  
(Refer to photo # 1)
- **Install with panels overlapping so that foam butts to foam on the next panel.** (Refer to photo # 3-)
- **Nail every 16" through center of nail slots. DO NOT NAIL TIGHT.**
- **Leave a minimum of 1/4" clearance at all openings and accessory channel stops to allow for normal expansion and contraction for both the DuraPlank panel and foam. In cold weather (below freezing) leave 3/8" minimum clearance.**



Ensure foam is aligned properly with panel to be overlapped.



Install with panels overlapping so that foam butts to foam on the next panel.



Finishing Course

### Finishing Course

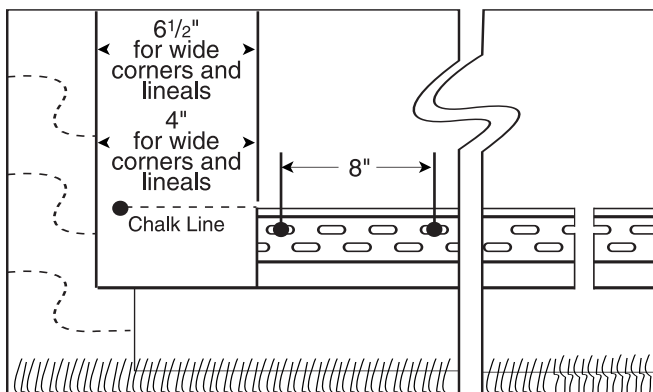
- At the top of the wall, when installing into the finishing accessories, trim and drop in the necessary width of foam before locking the siding into the dual undersill trim.
  - Use snap lock punch to create tabs on outside face of panel, 1/4" below cut edge. Space tabs about 8"-12" apart.
  - To install, lock bottom of cut panel into panel below. Push top edge into finish trim. Tabs will latch in trim and hold panel firmly in place.
- Note:** Since you will not nail this last course, it is important that the tabs fit properly in finish trim to provide support while allowing movement for expansion.

# Installation Guide (continued)

## Preparation for DuraPlank

- 1) Make sure all studs are straight and true. Correct any bowed studs. **NOTE: Vinyl siding must be applied over a rigid sheathing that provides a smooth, flat surface or an underlayment (such as wood, wood composition, rigid foam or fiber sheathing). Vinyl siding cannot be applied directly to studs.**
- 2) Make sure sheathing is fastened securely to studs.
- 3) If you're planning to use a conventional house wrap or building felt, apply according to the manufacturer's recommendations. In all cases, however, install the products so they are secured firmly to the substrate so that they provide a smooth, even surface for the final siding installation.
- 4) Before applying siding make certain substrate is watertight. (In order to be properly protected from precipitation, the substrate may need to be properly flashed around areas such as windows, doors, other openings and corners so as to shed water to the exterior. The siding alone is not meant to be a watertight barrier.)

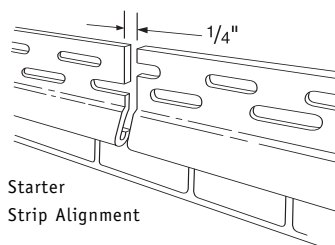
**NOTE: Failure to establish a smooth, solid surface constitutes misapplication under the terms of the warranty.**



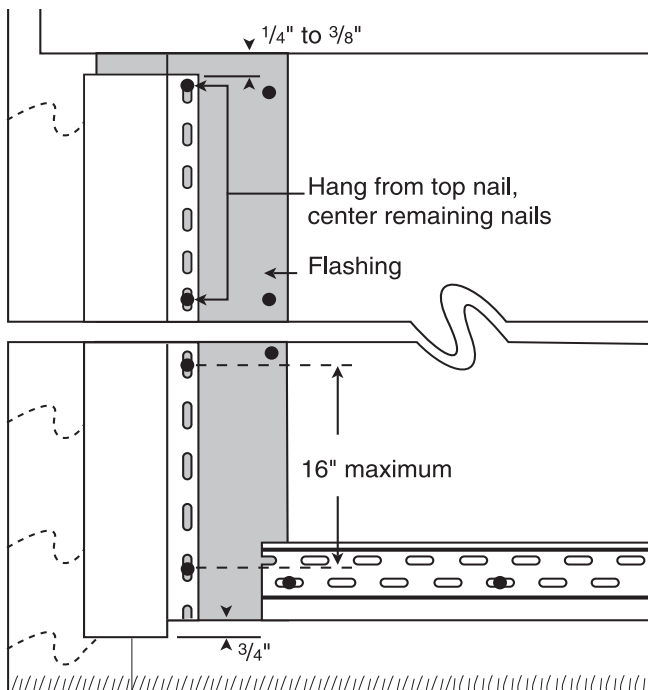
Starter Strip Nail Position

## DuraPlank Starter Strip (required)

- Nail starter every 8" in middle of nail slot.
- Cut starter strip back from each corner. Leave 1/2" gap from all corner post nail hems.
- Allow at least 1/4" separation between pieces of starter strip.



Starter Strip Alignment



Lapping

## DuraPlank 5" Outside Corner Post

- Position 5" outside corner post with the top of the post 1/4" from the underside of the eave and the bottom of the corner post 3/4" below the starter strip. Remove the bottom 3/4" of the nailing flange so it will not show below the siding when installed.
- Make sure posts are straight and true before nailing. Hang corner posts by first positioning a nail at the top of the topmost nail slot. Position all remaining nails in the center of nail slots a maximum of every 10". This nailing pattern is to be followed on both nail flanges of each post.



**Royal Building Products**  
*Where Great Ideas Take Shape*

[www.royalbuildingproducts.com](http://www.royalbuildingproducts.com)

000RDP460IG - 03/05